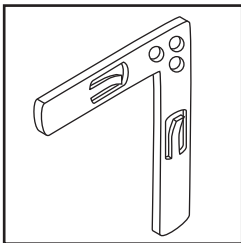
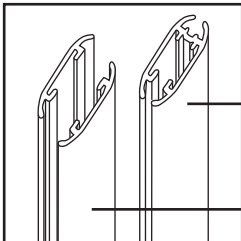


Parts

Note: Please layout parts in order on the floor before assembly.



(8) Corner Brackets

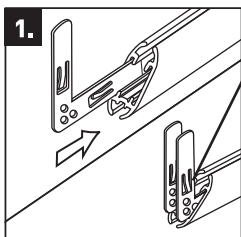


(3) Solid Ano Rails

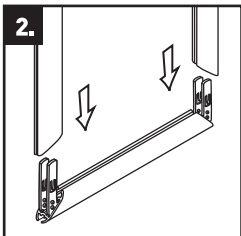
(2) Split Ano Rails

Steps

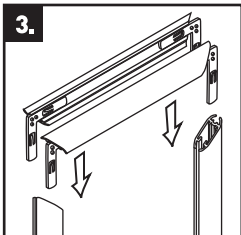
Frame Assembly



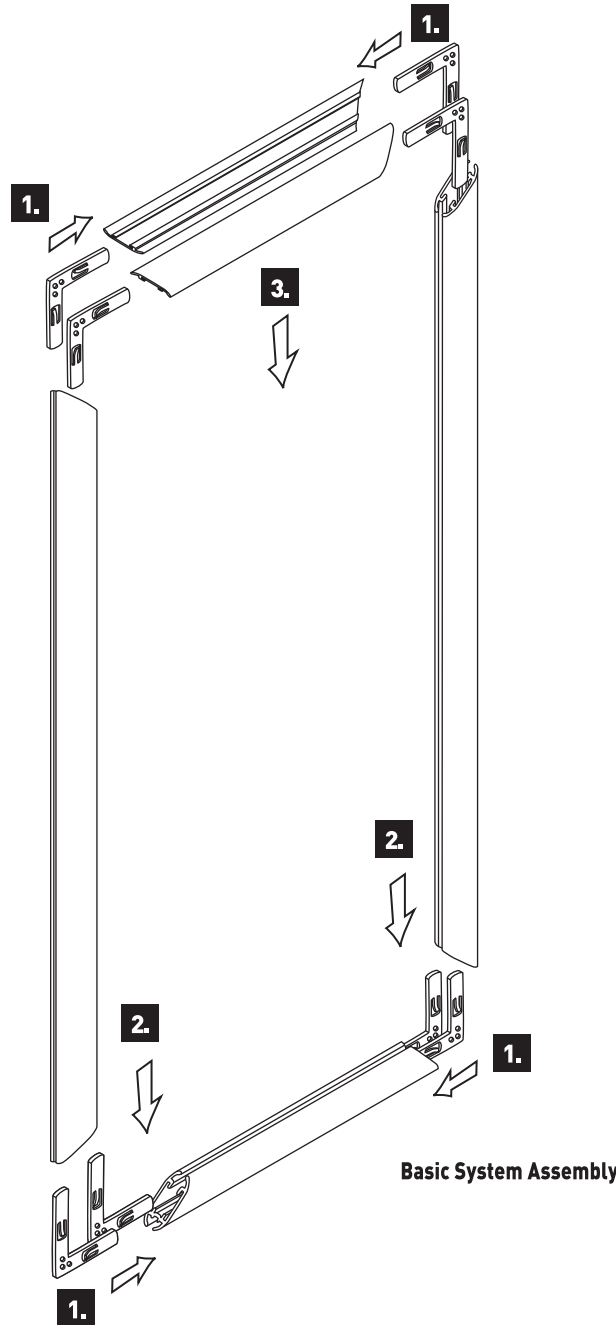
1. Identify split rails and solid rails. Solid rails are the same length as the split rails. Insert corner brackets into ends of these rails.



2. Push remaining solid rails onto solid rail with brackets from step 1.

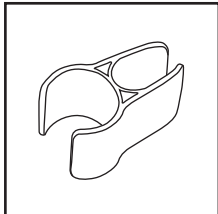


3. Push split rails onto frame.

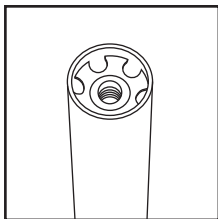


Parts

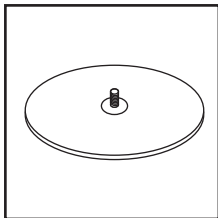
Note: Please layout parts in order on the floor before assembly.



SnapOn Clip™

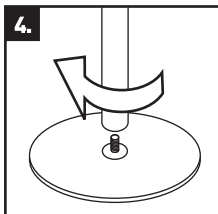


Pole

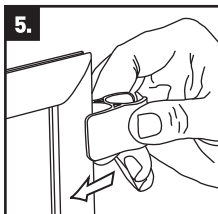


Pole Base

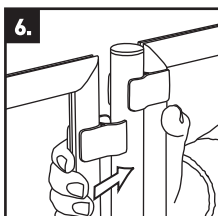
Steps



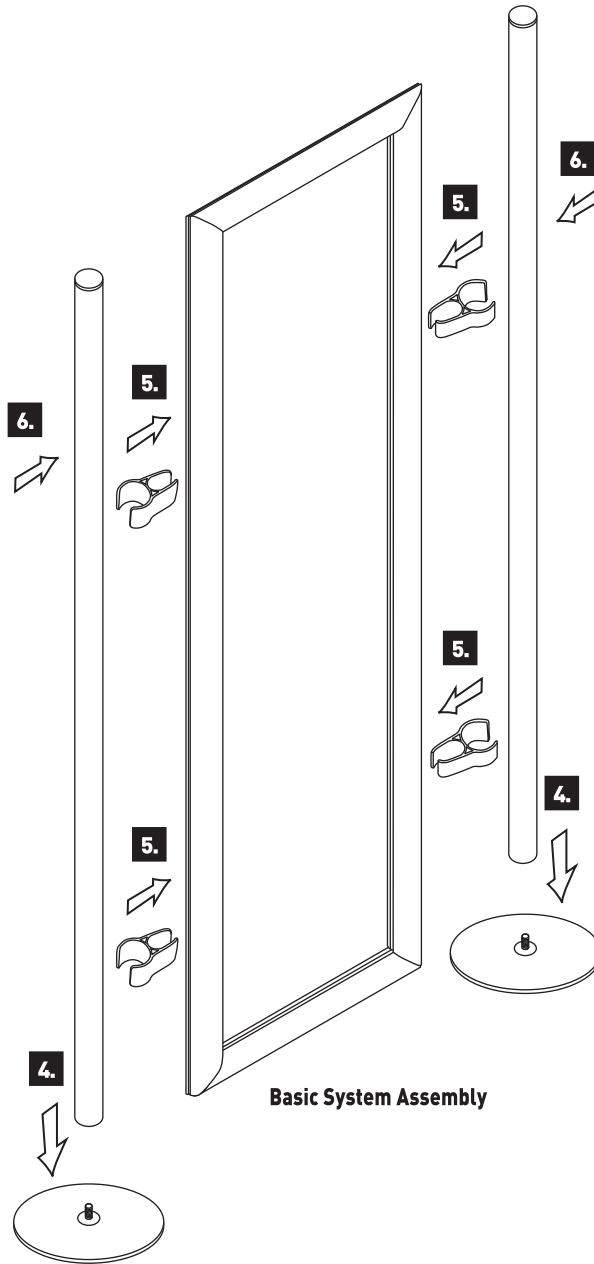
4. Screw poles onto bases. Tighten.



5. Snap clips onto frames first.



6. Then snap frames onto poles.



The AnoFrame SnapOn System is a trademark of Rose Displays, Ltd. Neither the manufacturer nor any sales agent may be held liable for injury, loss or damage resulting from the use of these products. Part #04INSAnoFrameSnapOnSystem